

# INTELLIGENT TRANSPORTATION SYSTEM

Industrial Grade Storage & Memory Solutions

As automotive IoT and 5G communication technologies advanced, the revolutionized ITS (intelligent transportation systems) has been implemented in cities worldwide to improve traffic congestion and safety. An ITS system involves technologies that require comprehensive combinations of sensors, real-time surveillance systems, advanced edge computing solutions, and intercommunication ability.



## Powerguard SSDs

M336 / T376

- 3D MLC / TLC NAND Flash
- Powerguard (Power Loss Protection)
- With DRAM Buffer
- Wide Temp. (-40°C ~ 85°C)
- 2.5" SATA, mSATA, M.2 2280



## DDR4 DRAM Module

- High Speed, High Capacity
- Capacity: 4GB~32GB
- Data Rate: 2133~3200MHz
- DIMM/ SO-DIMM/ VLP DIMM/ VLP SO-DIMM

**V2V**  
In-Vehicle

## In-Vehicle SSDs

T376 / T385 / T435

- 3D TLC NAND Flash
- ISO-16750-3 Certified
- Wide Temp. (-40°C ~ 85°C)
- Anti-Vibration Fill
- 2.5" SATA, mSATA, M.2 2242/2280

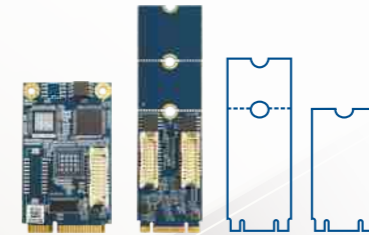
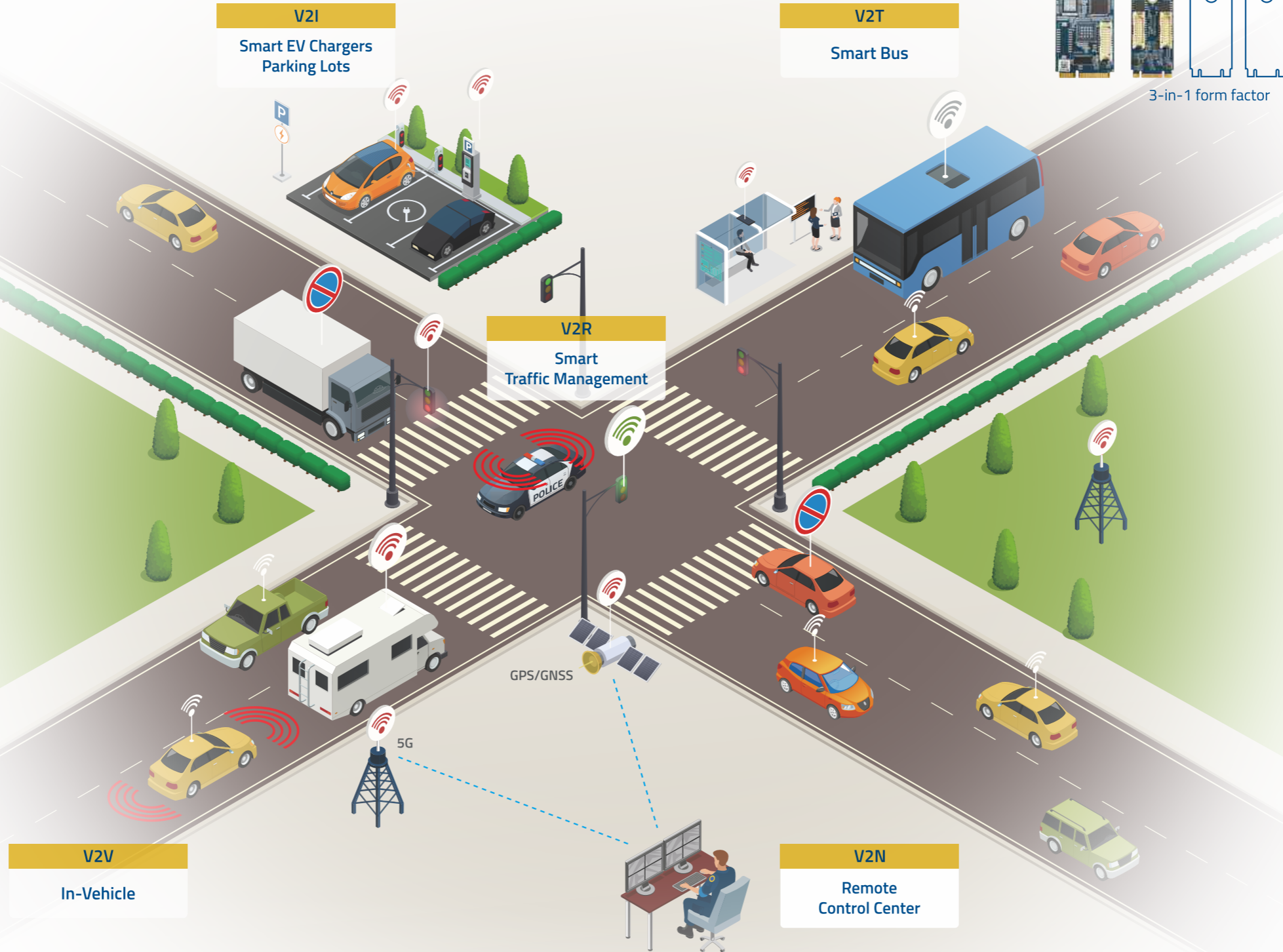


**V2I**  
Smart EV Chargers  
Parking Lots

**V2T**  
Smart Bus

**V2R**  
Smart  
Traffic Management

**V2N**  
Remote  
Control Center



3-in-1 form factor

## Modular Expansion Card

MEC-LAN (Ethernet Solution)

- Form Factor: Mini PCIe/ M.2 2242/60/80 3-in-1
- Surge Protection 2.5kV
- Wide Temp. (-40°C ~ 85°C)
- MECFIX (Versatile Mounting Mechanism)



## Modular Expansion Card

MEC-DIS (Display Solution)

- Mini PCIe
- Support simultaneously dual display output
- On board video memory with 16MB DDR SDRAM

MEC-WiFi (WiFi Solution)

- Mini PCIe/ M.2 2230
- 802.11 a/b/g/n/ac + Bluetooth 5.0



## DDR5 DRAM Module

- New-Gen DRAM Module
- 4xCapacity, 2xSpeed than DDR4
- Capacity: 8GB ~ 32GB
- Data Rate: 4800 MHz
- DIMM/ SO-DIMM

## NVMe PCIe Gen. 3x4 SSDs

T405 / T435

- 3D TLC NAND Flash
- Wide Temp. (-40°C ~ 85°C)
- End-to-End Data Protection
- Dynamic Thermal Throttling
- M.2 2242/2280



## Flash Storage Solutions

	M336	T376	T385	T435
Interface	SATA III	SATA III	SATA III	PCIe Gen. 3x4
Flash Type	MLC	TLC	TLC	TLC
Powerguard (Power Loss Protection)	✓	✓	–	–
With DRAM Buffer	✓	✓	✓	✓
ISO-16750-3 Certified (Shock & Vibration Resistance)	–	✓	✓	✓
Wide Temp. (-40°C ~ 85°C)	✓	✓	✓	✓
Anti-Vibration Fill (Optional)	✓	✓	✓	✓
Conformal Coating (Optional)	✓	✓	✓	✓
Form Factors	2.5" SATA, mSATA, M.2 2280		2.5" SATA, mSATA	M.2 2242/2280

Product specifications are subject to change without prior notice.

## DRAM Module Solutions

	DDR4	DDR5
Module Type	DIMM/ SO-DIMM/ VLP DIMM/ VLP SO-DIMM	DIMM/ SO-DIMM
Data Rate	2133~3200MHz	4800MHz
Capacity	4GB~32GB	8GB~32GB
Burst Length	8	16
Bank	16	32
Voltage	1.2V	1.1V
On-Die ECC	–	✓
Power Management	On Motherboard	On-DIMM PMIC
Operating Temp.	0°C ~ 85°C / -40°C ~ 85°C	0°C ~ 85°C / -40°C ~ 85°C
Anti-Vibration Fill (Optional)	✓	✓
Conformal Coating (Optional)	✓	✓

Product specifications are subject to change without prior notice.

## Modular Expansion Solutions

	MEC-LAN	MEC-WiFi	MEC-DIS
Solution	Ethernet	WiFi	Display
Form Factor	Mini PCIe/ M.2 2242/60/80 3-in1	Mini PCIe/ M.2 2230	Mini PCIe
Controller	Intel I210 x1 / x2	Realtek	SM750
Frequency Range	–	802.11 a/b/g/n/ac with Bluetooth 4.0/ 4.2	–
Interface (Connector)	Ethernet 10/100/ 1000 x1 / x2 (RJ45)	–	DVIx1 (DVI-I)
Dimensions (WxL, mm)	30.00 x 50.95/ 22.00 x 42.00/60.00/80.00	29.85 x 26.65/ 22.00 x 30.00	30.00 x 50.95
Operating Temp.	0°C ~ 70°C / -40°C ~ 85°C	0°C ~ 70°C	0°C ~ 70°C
Surge Protection 2.5kV	✓	–	–
MECFIX (Versatile Mounting Mechanism)	✓	–	✓

Product specifications are subject to change without prior notice.

## Our Value

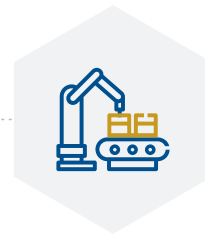
### Core Competences

We stand together with our customer through listening to the demand and feedback, using our experience and expertise to collaborate producing high reliability and compatibility product for industrial applications.



#### Industrial Grade Design

Only first-grade materials are used for all product lines. Our R&D expertise results in outstanding hardware and firmware designs creating products with the highest reliability, compatibility and endurance.



#### Manufacturing

In the manufacturing process, we utilize the latest automation technologies. Every workflow is in line with ISO international standards to create a high-yield and the highest quality products.



#### Product Management

We follow a unified fixed BOM principle, as well as long-term product availability in order to fulfill customers' long-term projects. Cervoz' product lifecycles are 3 to 5 years, with 8 years being the longest. We have a comprehensive ERP inventory management system with high safety stock levels ready to deliver when you need us.



#### Quality Assurance

For our quality assurance procedures, we test at all levels, including EVT (Engineering Verification Test), DVT (Design Verification Test) and PVT (Production Verification Test), as well as application and compliance tests. It brings Cervoz' product with high reliability and top compatibility. Cervoz products are certified with CE, FCC, REACH and RoHS.



#### Premium Service

We care about every detail and exceed customers' expectations. We use our industry know-how and experience to offer premium sales and services and provide real-time technical support. Our services cover specialized testing and reporting on demand, debugging analysis, customization service and many more.



---

## About Cervoz

Cervoz develops, produces and markets industrial storage and memory products for the professional, critical, and diverse industrial applications.

Established in 2006, Cervoz specializes in embedded components for the demanding Industrial PC market and has built up our industry experience for over a decade. We deeply understand this industry, and thus are able to offer our high quality embedded products with legacy and mainstream technology, long-term availability, BOM (bill of material) control, high reliability and top compatibility.

**CERVOZ**



8F., No.10, Aly.6, Ln.235, Baociao Rd.,  
Sindian Dist., New Taipei City 23145,  
Taiwan

+886-2-2911-9599

sales@cervoz.com

www.cervoz.com

© Cervoz Technology Co., Ltd.  
All rights reserved.